



Bulletin 2.0
Federation version
[February 2025]



Welcome to the World Gymnaestrada 2027



Get ready for a one-of-a-kind spectacle, where the passion for gymnastics meets the charm of Lisbon. From July 11th to 17th, 2027, the Portuguese capital will become the heart of Gymnastics for All, bringing together thousands of participants from all over the world to celebrate unity, diversity, and a shared love for gymnastics.

Lisbon, the city of seven hills, will serve as the perfect backdrop for World Gymnaestrada 2027. With its warm climate and unmatched hospitality, the capital promises an unforgettable experience for all visitors. Take the chance to marvel at the breathtaking views of the Tagus River, enjoy the many viewpoints scattered across the city, and wander through the colourful streets paved with traditional Portuguese cobblestones.

World Gymnaestrada is much more than a sporting event: it's a celebration of human diversity and creativity. Free from the pressures of competition, you will have the space to express your emotions and creativity in performances that capture the true spirit of gymnastics.

Lisbon awaits you with open arms! Come and explore all that this city has to offer, and feel the excitement of being part of World Gymnaestrada in a place where history, culture, and a sense of community come together as one. Get ready to be inspired, to forge connections, and to create memories that will last a lifetime.

World Gymnaestrada is an experience you won't want to miss, and Lisbon, with its vibrant and welcoming spirit, is the ideal setting for this adventure. Seize the opportunity to be part of an event that will leave its mark on the history of gymnastics – and on your life.



Bulletin 2.0
Federation version
[February 2025]



PEDRO DIAS

Message from the Secretary of State for Sports

Dear Gymnastics Friends,

It is with a great enthusiasm that Portugal receives World Gymnaestrada once again.

The event is a unique opportunity for participants to connect and celebrate their passion for gymnastics.

World Gymnaestrada is a large, international gymnastics event that focuses on non-competitive gymnastic performances.

The event brings together gymnasts from various countries to showcase their skills in a collaborative and celebratory atmosphere.

Lisbon will be the city for World Gymnaestrada, in 2027, and intends to receive participants under this idea: "Connecting the World".

We believe that the attribution of the event to Lisbon, which has already hosted the World Gymnaestrada in 2003, rewards the ability of Portugal to organize major international events.

The great work of portuguese gymnastics, athletes and clubs will also help to build a great moment for all those who will come to Portugal.

This event will help us to reinforce the importance of sport and health, through physical activity, which is also the engine of society.

The goal of World Gymnaestrada is not competition but rather a celebration of gymnastics as a form of expression and movement. The event promotes friendship, cultural exchange, and physical fitness among its participants.

The Government of Portugal is confident. This will be a great event for everyone.



CARLOS MOEDAS

Message from the Mayor of Lisbon

Bold. Creative. Inspiring. Such is the city that will welcome you all three years from now, in July 2027: the city of Lisbon, with its millennial history that takes us back to the Phoenicians, with its seven hills, its iconic landscape where the river meets the ocean, its colorful streets and alleys... An old city that is also a capital of innovation (being the current European Capital of Innovation), home to a vibrant cultural scene, and one of the world's most visited cities.

This is the city that will host 25 000 athletes for the World Gymnaestrada 2027. As Mayor of Lisbon, I couldn't be prouder of hosting the world of gymnastics here. In gymnastics we find exactly those three core characteristics I listed above when describing Lisbon: boldness, creativity, inspiration. Boldness because you take risks. Creativity because you always seek originality, not mere imitation. And you inspire us all by this example.

You will be spreading this exact same spirit throughout our city for eight days: from the main venue, MEO Arena, to the other side of the city, in Belém and Restelo. You will be showing the city the best of world gymnastics – its unforgettable energy and its undeniable beauty together with your unique passion. It will be an extraordinary week.

We can't wait to welcome you all in Lisbon!



LUÍS ARRAIS

Message from the President Gymnastics Federation of Portugal



JULY 11-17

Dear friends,

We are getting the entire structure ready to welcome you all at the next World Gymnaestrada 2027 in Lisbon.

The city of Lisbon, with its institutions and our entire Portuguese gymnastics family, are preparing what we hope will be the best World Gymnaestrada ever!

The performances will be held in some of the most emblematic locations in Lisbon, showcasing our traditions, memory and our culture.

Lisbon awaits you all.

Let's make this World Gymnaestrada the great image of our sport and let's show our strength and the beauty of World Gymnastics.

LET'S GO GYMNASTICS!



ROGÉRIO VALÉRIO

Message from the President FIG Gymnastics for All Committee

Dear Gymnastics Friends,

A new World Gymnaestrada cycle has just started!

I am sure the Gymnastics for All community is anxiously looking forward to the next World Gymnaestrada in Lisbon, Portugal.

This is the biggest FIG event and provides opportunities to gather friends from all continents, with different cultures, ages and abilities but with a common passion – Gymnastics.

Start preparing now so that you can inspire and surprise us with your unique performances!

Looking forward meeting you all in the beautiful city of Lisbon, Portugal.

Connecting the World: The heart of the 2027 World Gymnaestrada

As we look ahead to the World Gymnaestrada 2027 in Lisbon, we are reminded of the core essence that binds us together: the power of connection. Our event's motto, "Connecting the World", encapsulates the deep, enduring relationships fostered through gymnastics – a global language that transcends borders, cultures, and differences.

The World Gymnaestrada has always been more than just a gathering of gymnasts. It's a celebration of unity, a stage where gymnasts from every corner of the globe come together to share their passion, artistry, and teamwork. In an era where the world faces unprecedented challenges, staying connected is more important than ever. Gymnastics, with its values of mutual respect, cooperation, and inclusivity, offers a unique platform for strengthening these bonds.

Every performance at the World Gymnaestrada tells a story. Stories of resilience, creativity, and the beauty of human movement. But more than that, it reminds us that we are part of a larger global family, united by the shared values of health, joy, and artistic expression. The friendships and connections made at these events are lasting, and they go beyond the arena, helping to foster understanding and harmony in the wider world.

We invite you all to join us in this mission of Connecting the World in 2027. Together, let's create a future where the ties we build today serve as the foundation for a more connected and peaceful world.

#ConnectingTheWorld



Lisbon

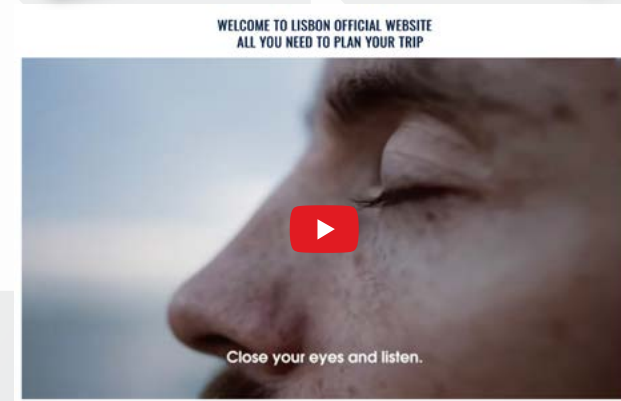
Lisbon, the capital of Portugal, is a vibrant city and rich in history. Situated on the hills alongside the river Tagus, Lisbon offers a unique combination of tradition and modernity. With its cobblestone streets, charming squares and iconic trams, the city is a true labyrinth of charm.

Historic neighbourhoods like Alfama and Bairro Alto are known for their colourful facades, whereas Chiado offers a more sophisticated atmosphere, filled with stores and cafes. One of the most well known landmarks is the Belém Tower and that deserves a mandatory visit.

Lisbon is also famous for its gastronomy. The codfish dishes, the Portuguese custards and the Port are just some of the delicacies you will be able to enjoy. Apart from that, the city is known for its vibrant and cultural nightlife, with several events, festivals and a vibrant musical scene.

Sports also play an important role in Lisbon society, with historic clubs as well as being an excellent host of important national and international events (European and World championships in several sports).

In 2027, World Gymnaestrada will take over the historic streets and squares of Lisbon.



Video: <https://www.visitlisboa.com/en>

Traditional Portuguese mosaic paving. The cue for the event's brand identity.



Coming to Lisbon you will have much to see: colourful doors and windows, amazing street art and beautiful tiles. But there is more to enjoy right beneath your feet! The typical Portuguese pavements with patterns in white and black stones called 'calçada portuguesa'.

The literal translation of 'Calçada Portuguesa' is Portuguese Pavement. So, strictly speaking, the general Portuguese sidewalks in white stones are 'Calçada Portuguesa'. But when the Portuguese people talk of 'Calçada Portuguesa' they will refer to the beautiful and artistically patterned pavements, mostly in black and white square shaped cobbles.

In Portugal, paving as a craft appeared around 1500, but it was not until the 19th century that it was executed the way we know it today. Portuguese cities in mainland and overseas were carpeted with this art. Brazil (Copacabana), Macau, Japan or Hawaii are some of the places where you can find samples of this beautiful art.

Patterns were improved and, over the years, they ended up becoming a brand image, in the country and particularly in Lisbon! The Portuguese sidewalk was the motto for developing the event's visual identity.

#ConnectingTheWorld



Iconic Portuguese sidewalk pattern called "Mar Largo" (Wide Sea).



The movement... on the sidewalk patterns and gymnastic compositions!

Just like the "Calçada Portuguesa", Group Gymnastics results, as a whole, from the sum of parts (the gymnasts) in schemes and geometric combinations of greater or lesser complexity!

Combined with the logo's color palette, the different patterns of the Portuguese sidewalk will form the graphic elements of the event's brand image.

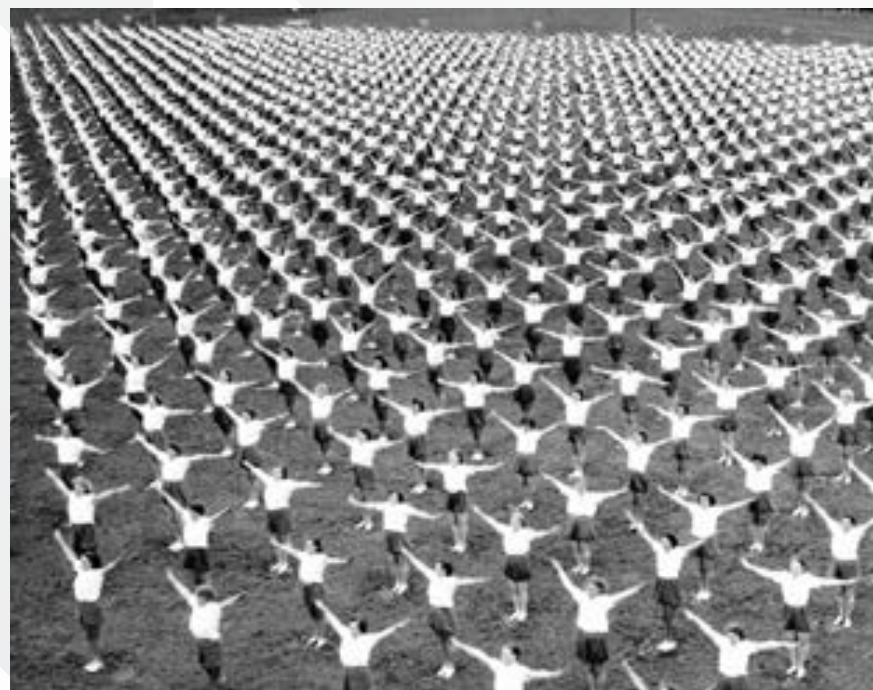


WORLD GYMNAESTRADA

The World Gymnaestrada is an international gymnastics event that takes place every four years, bringing together gymnasts from all around the globe. Established in 1953 by the International Gymnastics Federation (FIG), this unique event promotes gymnastics as a means of physical fitness, artistic expression, friendship and social interaction.

World Gymnaestrada is characterized by its non-competitive nature, allowing participants to showcase their skills in performances that emphasize creativity, teamwork, and the joy of movement. The event typically features a wide range of gymnastic disciplines, including all gymnastics disciplines, along with various dance performances, with and without apparatus.

One of the hallmark features of the World Gymnaestrada is its festive atmosphere, with participants often performing in large groups in front of enthusiastic audiences.





#ConnectingTheWorld

TWENTY-FOUR YEARS HAVE PASSED AND THE WG RETURNS TO LISBON!

It was in 2003 that the biggest gymnastics event arrived in Portugal. For the first time, the WG was hosted in the south of Europe. What a remarkable challenge!



So much has changed since then. The landscape has changed, the people have grown, the country has evolved, and the world has adapted to the challenges it has been presented with... And so has gymnastics!

2027 will be the year of the of this great return. Many have asked for and dreamed about this moment. This time around, the city recognizes and understands the dynamics involved in this as well as the massive groups that will wonder the streets. Schools will become accommodation, stages set up in the middle of the city, colourful tracksuits will flood public transport and there will be spontaneous performances around the streets!

The places that were vital to the 2003 edition will once more be the stage of the amazing performances these groups from all around the world will bring to Lisbon.

This organization group will benefit from the expertise and the experience of all of those involved in the 2003 edition and the

enthusiasm of those who experienced this event as gymnasts or spectators and who now want to be an intrinsic part of this structure.

The reputation Portugal has been developing since 2003 as an event organizer, is based on its excellence with its human resources, its ability to warmly welcome and embrace those who visit us, never once forgetting that the gymnasts deserve all the best.

In 2003 we celebrated the 50th anniversary of the first edition of the World Gymnaestrada. Today, we are working towards making WG Lisbon '27 unforgettable and worthy of its 74th anniversary celebrations.

As was promised in 2003, we want to continue to believe in the maxim "May our sunshine stay in your hearts".

The city will once more be filled with colour, movement, joy and sharing.

World Gymnaestrada 2027 in numbers:



25.000
expected participants
from



70
different countries.

91 
different countries have
participated, at least once,
since the first edition of
World Gymnaestrada!


100.000m²
 EXHIBITION CENTER
of which



10.000m²
dedicated dining area
for



120.000
meals to serve.


7.000
seats to attend national
performances and FIG Gala.

8 
national performances

13 
activity venues

300 
gym apparatus


15.000
school accommodations


5.000
hotel
accommodations


All accommodation
accessible by public
transport

VENUES



UNIVERSITY
STADIUM OF
LISBON
🚆 24min

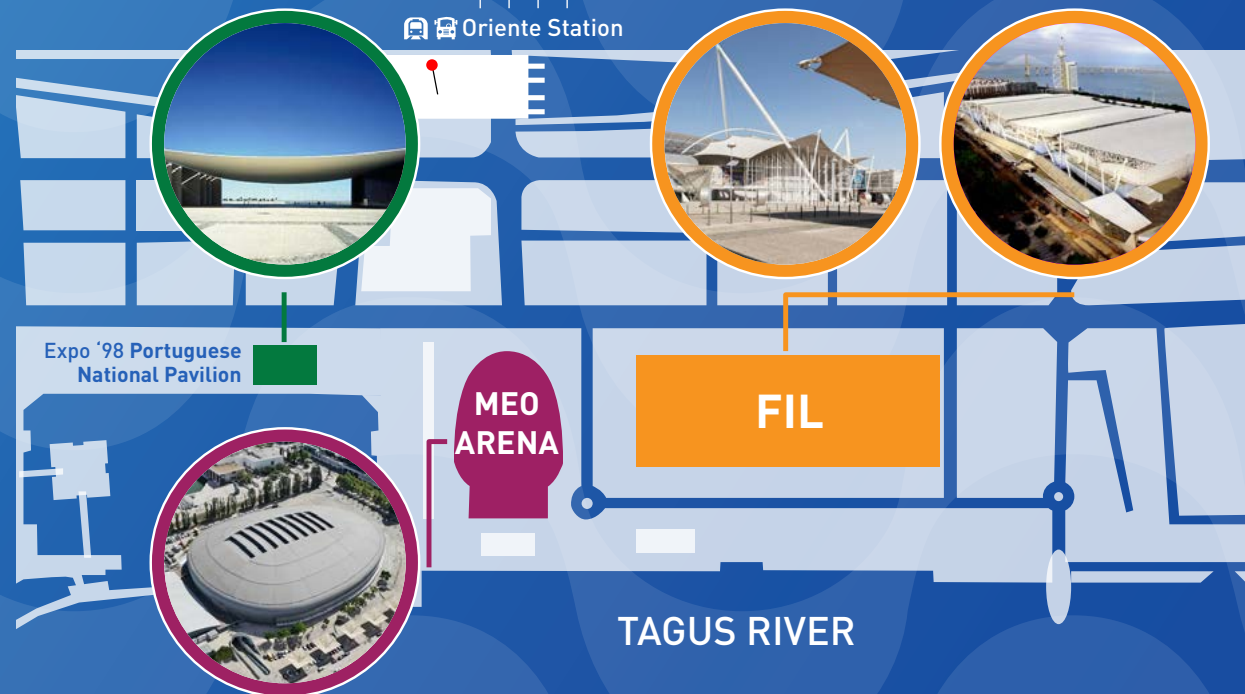


RESTELO
STADIUM
🚆 31min+ 🚌 22min



PRACA DO
COMÉRCIO
🚆 16min
🚆 21min

LISBON
AIRPORT
🚆 10min



RESTELO STADIUM

The Restelo stadium, located in the Belém área, is one of the most well known football stadiums in Portugal. Inaugurated in 1956, the stadium has a capacity of around 30.000 audience members. It is known for its distinct architecture and by its picturesque location by the river Tagus.

In addition to its main function as a place for playing football, the Restelo stadium is often commended for its facilities and for an environment which provides for a unique experience. Throughout the years, it has undergone several renovations to improve its infrastructure and cater to contemporary demands.

The Restelo stadium is more than just a sports space, it is a meeting point for the local community and a symbol of the Portuguese sports tradition. With its charm and history, it continues to hold a special place in the heart of sports lovers.

This is the ideal space to host the Opening and Closing Ceremonies of the biggest gymnastics event.

Pastéis de Belém



5min

Jerónimos Monastery



5min

Belém Tower



15min



MEO ARENA

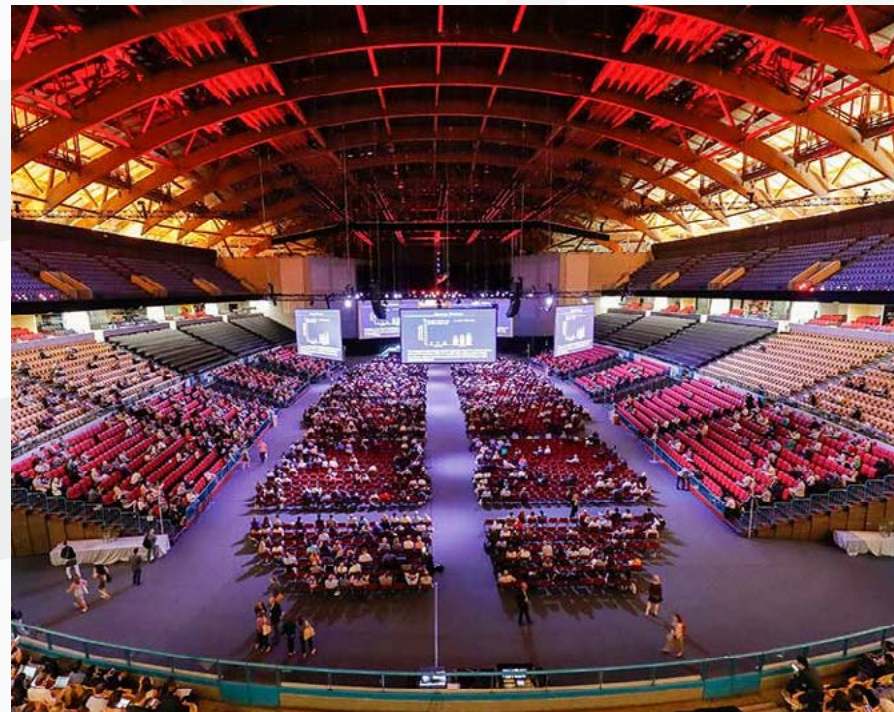
The biggest event room in the country will once again welcome World Gymnaestrada!

In the heart of the Parque das Nações (Lisbon) and 10 minutes from the international airport of Lisbon, we find this multipurpose space with a series of rooms prepared to accommodate the most diverse and important events.



Made up of three integrated areas, all the spaces are easily adapted to the needs and characteristics of each specific event. The Meo Arena room, with an arena of 5 200 m² and a seating capacity for 12.500 hosts all types of events with a unique versatility and an absolute success.

This arena will be the ideal scenario to host the organization of the National performances and the FIG Gala.



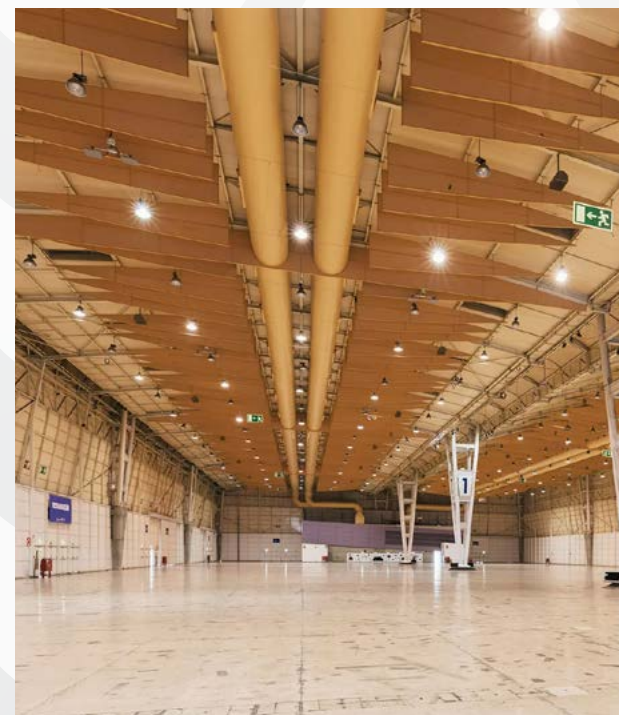
FIL

FIL is the main exhibition centre in Portugal, comprising a total area of 100.000 sqm, which includes 4 pavilions with enclosed meeting rooms and 1 multi-purpose pavilion with a modern architecture and fully equipped spaces for any type of event. Prepared for both fairs and congresses, FIL occupies a distinguished place among other European Venues.

FIL also includes the FIL Meeting Centre, with 3 auditoria, 5 meeting rooms and 2 foyers, offering excellent conditions for any event.

Located in Parque das Nações, near the riverside. Just 10 minutes from Lisbon airport, 200 meters from Gare do Oriente a Multi-modal transit hub, where we can find all public transportation for the city center, FIL and FIL Meeting Centre are synonymous of quality and innovation.

FIL venue will be the heart of the event for the Group Performances, catering and exhibition stands.



UNIVERSITY STADIUM OF LISBON

The University Stadium of Lisbon (USL) is an iconic space in the Portuguese capital made for sports and the promotion of leisure activities. Inaugurated in 1947, the stadium is located in a green area in the heart of Lisbon and is an integral part of the University of Lisbon.

The USL is known for hosting a series of sports events, from university

competitions to national and international events. The stadium has a football field and athletics track as well as several other infrastructures and fields that can support different sports such as football, rugby, golf, padel, volleyball, basketball, swimming and many other sports.

This will be the space reserved for the “Large Group Performances”.



PROGR	AMME					
SUNDAY JULY 11 th	MONDAY JULY 12 th	TUESDAY JULY 13 th	WEDNESDAY JULY 14 th	THURSDAY JULY 15 th	FRIDAY JULY 16 th	SATURDAY JULY 17 th
OPENING CEREMONY RESTELO STADIUM	GROUP PERFORMANCES FIL	GROUP PERFORMANCES FIL	GROUP PERFORMANCES FIL	GROUP PERFORMANCES FIL	GROUP PERFORMANCES FIL	FIG GALA MEO ARENA
		LARGE GOUP PERFORMANCES UNIVERSITY STADIUM	LARGE GOUP PERFORMANCES UNIVERSITY STADIUM		LARGE GOUP PERFORMANCES UNIVERSITY STADIUM	CLOSING CEREMONY RESTELO STADIUM
	NATIONAL PERFORMANCES MEO ARENA	NATIONAL PERFORMANCES MEO ARENA	NATIONAL PERFORMANCES MEO ARENA	NATIONAL PERFORMANCES MEO ARENA	FIG GALA MEO ARENA	

> Program is still in concept. Activities can change.

Programme

GROUP PERFORMANCES

Location

FIL - Lisbon Exhibition and Congress Centre

Date

Monday 12th July to Friday 16th July

Time

Daily from 9h00 to 18h00

Duration

10 or 15 minutes per show

Performance area

30m x 20m and 20m x 20m

Group Performances are designed to show the diversity of 'Gymnastics for All'. Groups include a minimum of ten active performers with no maximum number being set.

Performances will be presented three times in an indoor performance area at FIL - Lisbon Exhibition and Congress Centre. Each performance will take a maximum of either 10 or 15 minutes.



Programme

LARGE GROUP PERFORMANCES

Location

University Stadium

Date

Tuesday 13th July, Wednesday 14th July
and Friday 16th July

Time

14h00 to 18h00

Duration

Maximum 15 minutes per show

Performance area

111m x 64m

Large Groups will include a minimum of 200 active performers. Performances will be presented three times in the University Stadium in the centre of Lisbon. Two or more participating member federations may join to form one Large Group.

A Large Group Performance will have a maximum of 15 minutes.



Programme

CONNECTING THE WORLD TEAM

Location

University Stadium

Date

Tuesday 13th July, Wednesday 14th July
and Friday 16th July

Time

14h00 to 18h00

Duration

Maximum 15 minutes per show

Performance area

111m x 64m

The Connecting the World Team is an international Large Group Performance. Gymnasts from all over the world can take part in this performance. What is special about this performance, is that it is not connected to any group. All of those participating in the World Gymnaestrada can take part in it, even individuals. In this edition we want to connect the participants and gymnastics fans in one single choreography.



Programme

NATIONAL PERFORMANCE

Location

Meo Arena

Date

Monday 12th July to Thursday 15th July

Time

18h00 to 22h00

Duration

1h30m

Performance area

40m x 20m

Capacity

7.000 persons per show

Note

Spectators sitting on three sides of the arena, curtain on backside

Any FIG Member Federation can apply for a National Performance. Once it is approved by the FIG GfA Committee, that FIG Member Federation can present its 'Gymnastics for All' show.

These events are designed to give participating member federations an opportunity to present their range of

'Gymnastics for All' activities, combined with music and personality that fits their national culture. It is allowed for member federations to join another country, to present a joint National Performance.



Programme

FIG GALA

Location

Meo Arena

Date

Friday 16th July and Saturday 17th July

Duration

1h30

Capacity

7.000 persons per show

Performance area

40m x 20m

Note

Spectators sitting on three sides of the arena, curtain on backside

The FIG Gala is an event organised by the FIG, which shows the variety of Gymnastics for All and this is shown by their interpretation.

In order to select groups for the FIG Gala, all FIG member federations are invited to submit their groups at the Provisional Registration, by January 2026.



Programme

CITY PERFORMANCES

Location

Estimated three open-air stages in popular squares of Lisbon

Date

Monday 12th July to Friday 16th July

Duration

Maximum of 15 minutes per show

Lisbon is a fantastic city to discover where the modern mixes with the traditional, in many ways. Bringing Gymnastics to the people, by organising City Performances is a must in every World Gymnaestrada! We are going to place outdoor stages in beautiful squares and gardens around the city, where performances will take place from Monday to Friday.



Information meeting 📶

All FIG member federations will be invited to participate at the first information meeting will take place on the 18th September 2025. It will be held exclusively online and will take place at two different times to account for different time zones:

> 10:00 CET

> 18:00 CET

Participants must enrol beforehand by filling out a form to be sent out, via email, to all of the member federations affiliated with the FIG who meet the requirements to attend.

Each National Federation can choose one of this schedule hours to join the meeting.

Important!
18/09/2025

10:00 CET

NEW

18:00 CET

Participant card



Everyone who wishes to take part in this event, regardless of its role, must have a participant card.

The different roles as defined by the FIG, according to the accreditation rules are:

- > Gymnast;
- > Group Leader;
- > Head of Delegation;
- > Delegation Manager;
- > Medical staff;
- > Delegation staff;
- > Visitors/spectators.

The participant card costs **290,00€**. It includes, in addition to the right of participating in the event with all the safety and logistic conditions, and the necessary sports materials, entry to the Opening and Closing ceremonies, the Large Group exhibitions, the indoor exhibitions and the stand zones. It also includes an event guide in digital format and free public transport in Lisbon from accommodations provided by the LOC to the event venues and between event venues.



Process for the notification of interest

Invite for registration

The process to enrol for the World Gymnaestrada starts in February 2025. The Federation will receive an email with a link to the form. This must be filled out by the person in charge of this task in each respective federation.

Notification of interest

We request to be informed of your interest in participating in the World Gymnaestrada until the 31st July 2025 through the above mentioned form. In a second form, to be sent after the Information Meeting, it will be possible to participate in the FIG Gala 2027.

We will inform and guide you at every step throughout the whole process. In case of doubts, please contact us via the email address:

info.wg2027@ginastica.org



It's only a matter of time

> 2024 2025 2026 2027

October
Bulletin 1

February

- > Bulletin 2
- > Opening of Registration (notification of interest)

July

- > Deadline for Registration (notification of interest)

September

- > First online information meeting

January

- > Notification of the expected number of participants, Group Performances, Large Groups and National Performances
- > Registration for FIG Gala

March - June

[Month to be confirmed]

- > Second information meeting in person

April

- > Confirmation to the member federations of the number of Group Performances, Large Groups, FIG Gala and National Performances
- > Bulletin 3

July

- > Deadline for Provisional Registration

November

- > Bulletin 4

January

- > Definitive Registration (payment of 50% of the participant card)

April

- > Bulletin 5

May

- > Final payments

LOC



LUÍS ARRAIS
LOC President



ÁLVARO SOUSA
Executive Director



RICARDO LIMA
First Deputy ED



JOSÉ CARLOS MANAÇAS
Second Deputy ED
& Accommodation



ALEXANDRA PEREIRA
Volunteers



MARIANA LEMOS
Lisbon Gymnastics Association



ISABEL FALCÃO
Hotels



ISABEL XARA-BRASIL
Risk Management and
Quality Control



PAULA ARAÚJO
Administrative



JOÃO CHU
MKT & Communication



MIGUEL BALSAS
Security



GONÇALO ALVES
Transports



BERNARDO TOMÁS
Meals



JOSEFINA CRUZ
Protocol and
Social Programme



ANDRÉ NOGUEIRA
Technical & Equipment

Gymnastics for All Committee



ROGÉRIO VALÉRIO
President



JEROME HUEBSCHER
Vice President



CHRISTOPHER MUCHATUTA
Vice President



YUMIKO ITOH
Member



MONIKA SISKOVA
Member



LORI LAZNOVSKY
Member



MICHELE VIVIENE CARBINATTO
Member

NEW



LOCAL ORGANIZING COMMITTEE

Estrada da Luz, N° 30 A
1600-159 Lisboa
Portugal

Contact Person:
Mrs. Paula Araújo
info.wg2027@ginastica.org
Tel. +351 21 814 11 45
www.ginastica.org/wg2027



FÉDÉRATION INTERNATIONALE DE GYMNASTIQUE

Avenue de la Gare 12a
1003 Lausanne
Switzerland

Contact Person:
Mr. Alexandre Cola
acola@fig-gymnastics.org
Tel. +41 21 321 55 18
www.gymnastics.sport/site/

